

Ευθεία 146/66

Καθορισμός ομοδορμής γραμμής  
ἐπὶ οἰκονίδων κ. Καμνηρῶν

Ἰ Βάρην ο.τ. 9

Διανομή Ὑπ. Γεωργίῳ 1936 (α. κ. αὐτῶν 2352)

Ἡ ομοδορμὴ γραμμῆς εἶναι ὡς τὸν ἐπὶ τῆς ΑΒΓΔΕ, ὡς  
δε  $ΑΑ' = 7.70$ ,  $ΑΑ'' = 0.30$ ,  $Α''Α''' = 31.60$  καὶ Δ, Ε μὲν κ. αὐτῶν  
- τῶν ἐπιπέδων  $ΒΒ' = 33.00$  καὶ  $ΓΓ' = 0.20$ .

Ἐν Ἀθήναις τῆς 18-2-1966

Ὁ Συντάξας  
Τεχνικός-ὁμόλογος

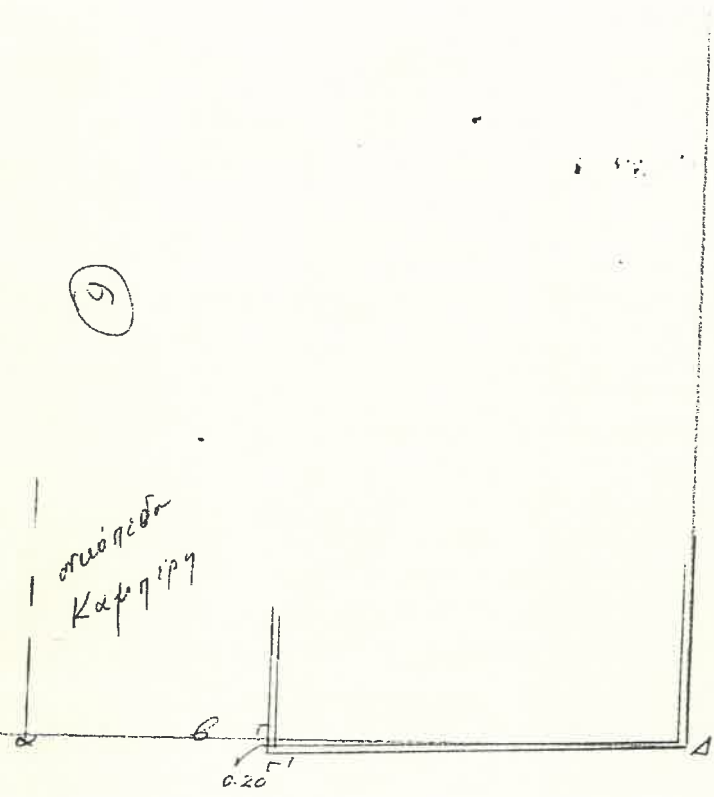
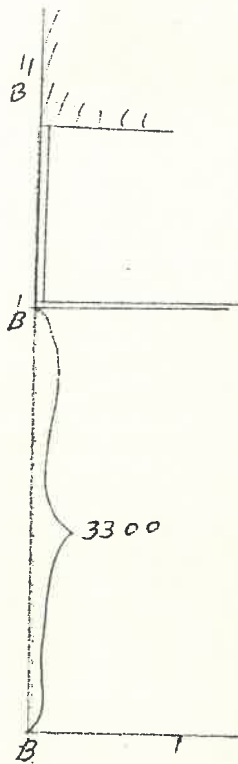
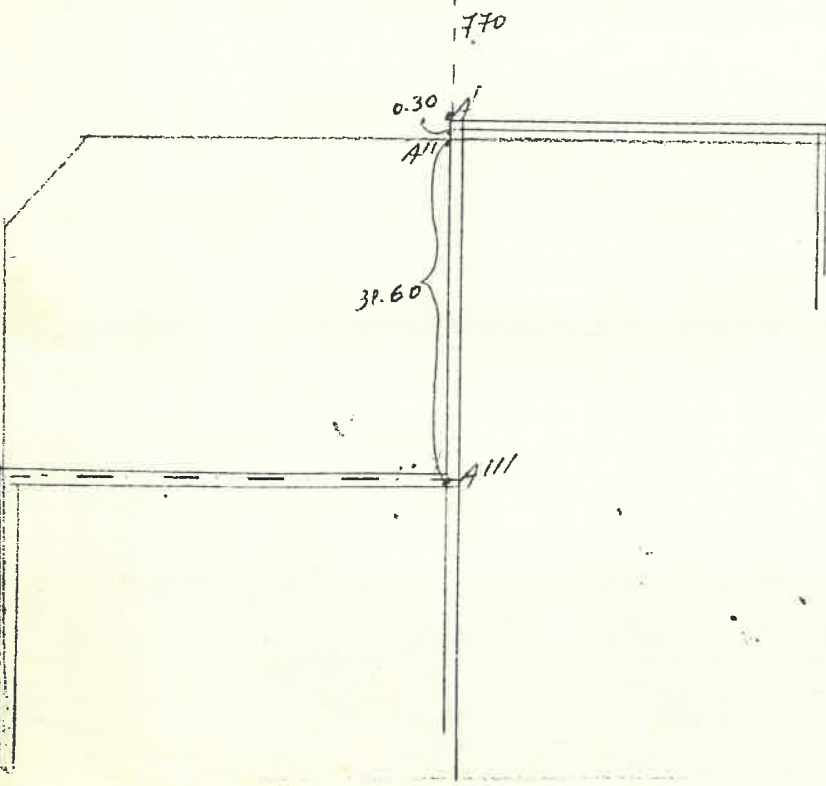
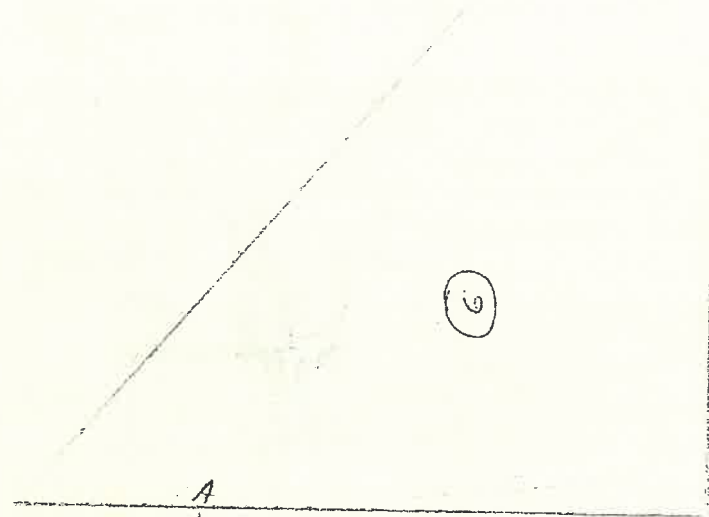
Νικ. Σταθόπουλος

Ἐν Ἀθήναις τῆς 24-2-1966

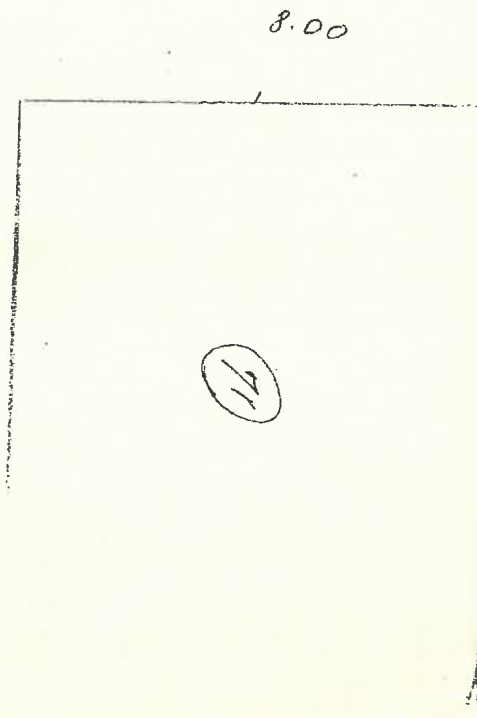
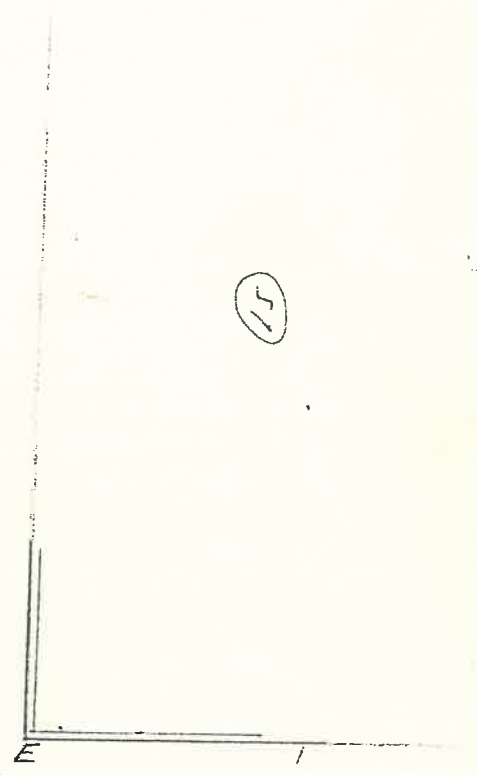
Προϊστάμενος τοῦ 2<sup>ου</sup> Γραφείου

Α. Α. Σταθόπουλος

ΣΚΑΡΙΦΗΛΙΑ



σύνολο Καφηλίων



5