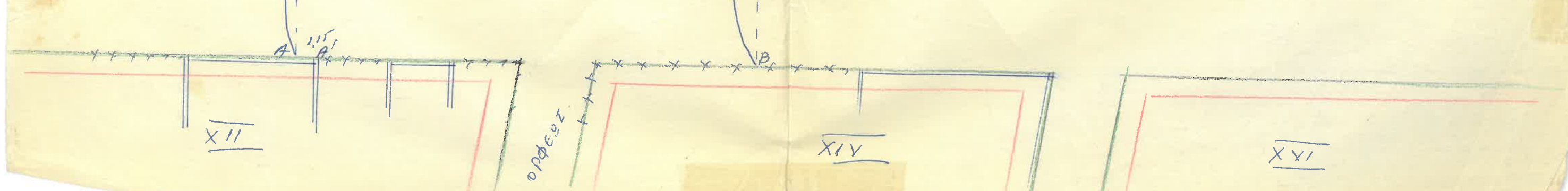
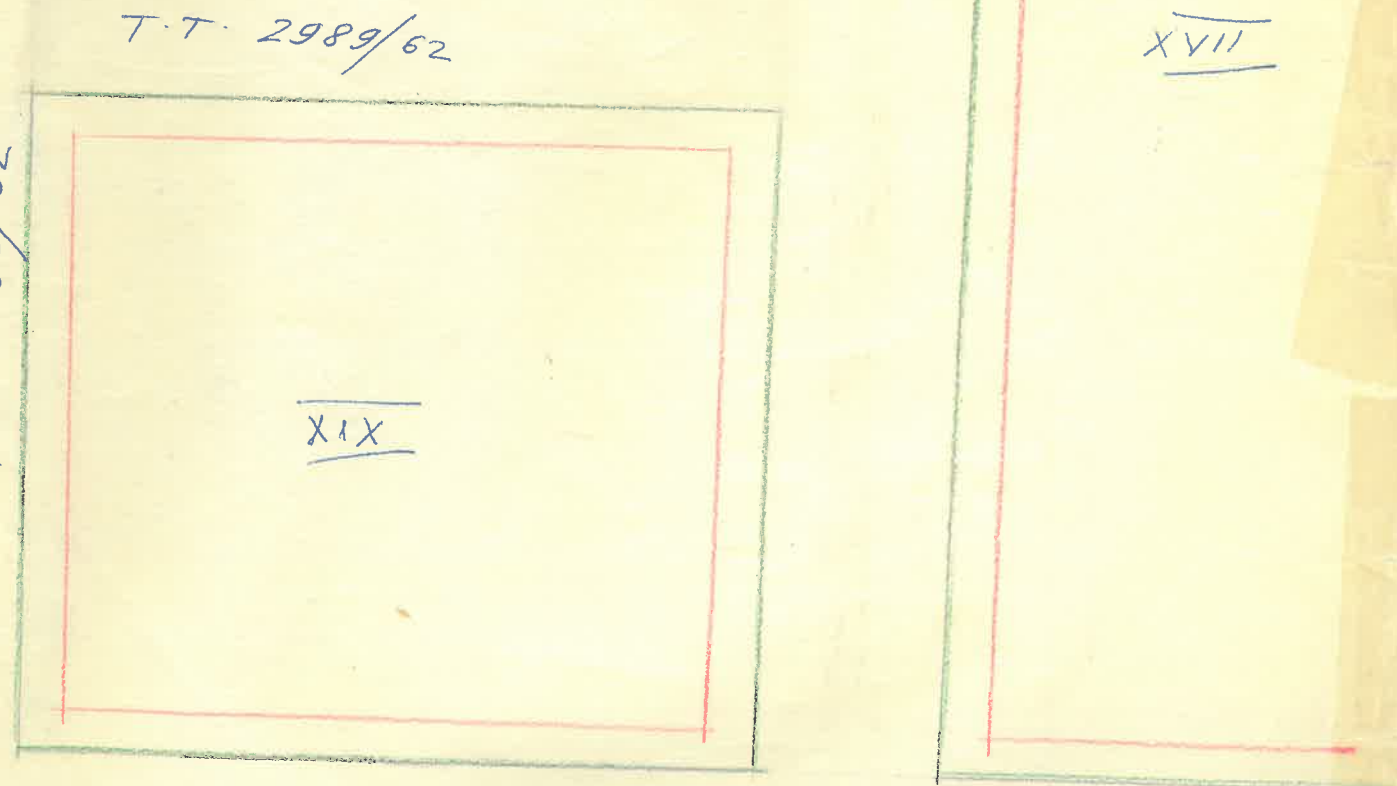
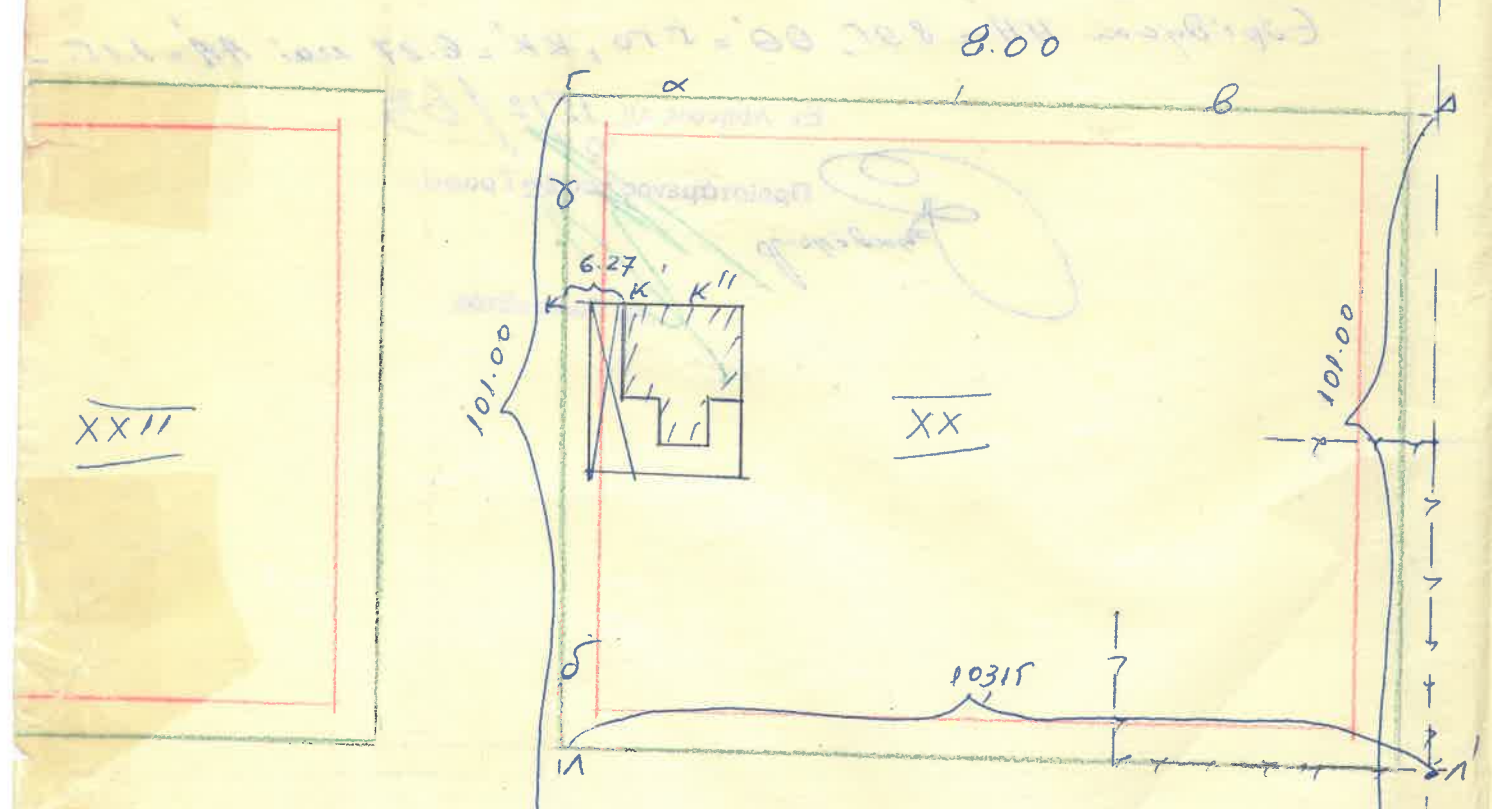
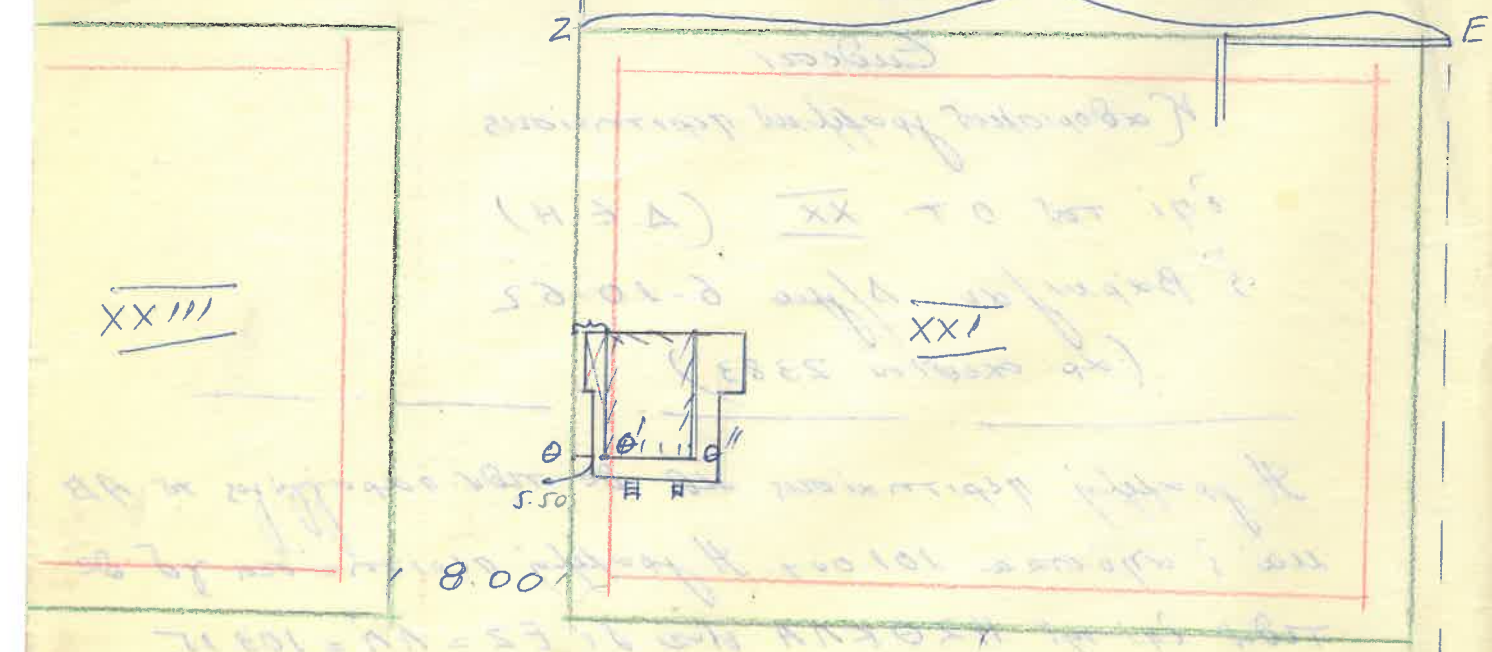
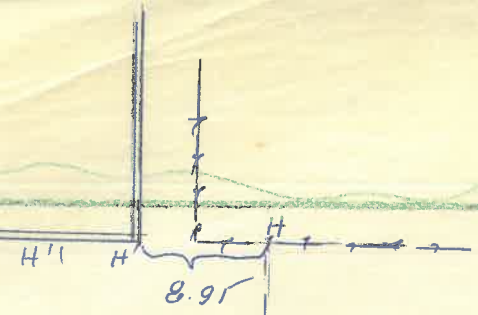


ΣΚΑΡΙΦΗΜΑ



Αριθ. Πρωτ. (Τμήματος) 93/63

Ευθεσία

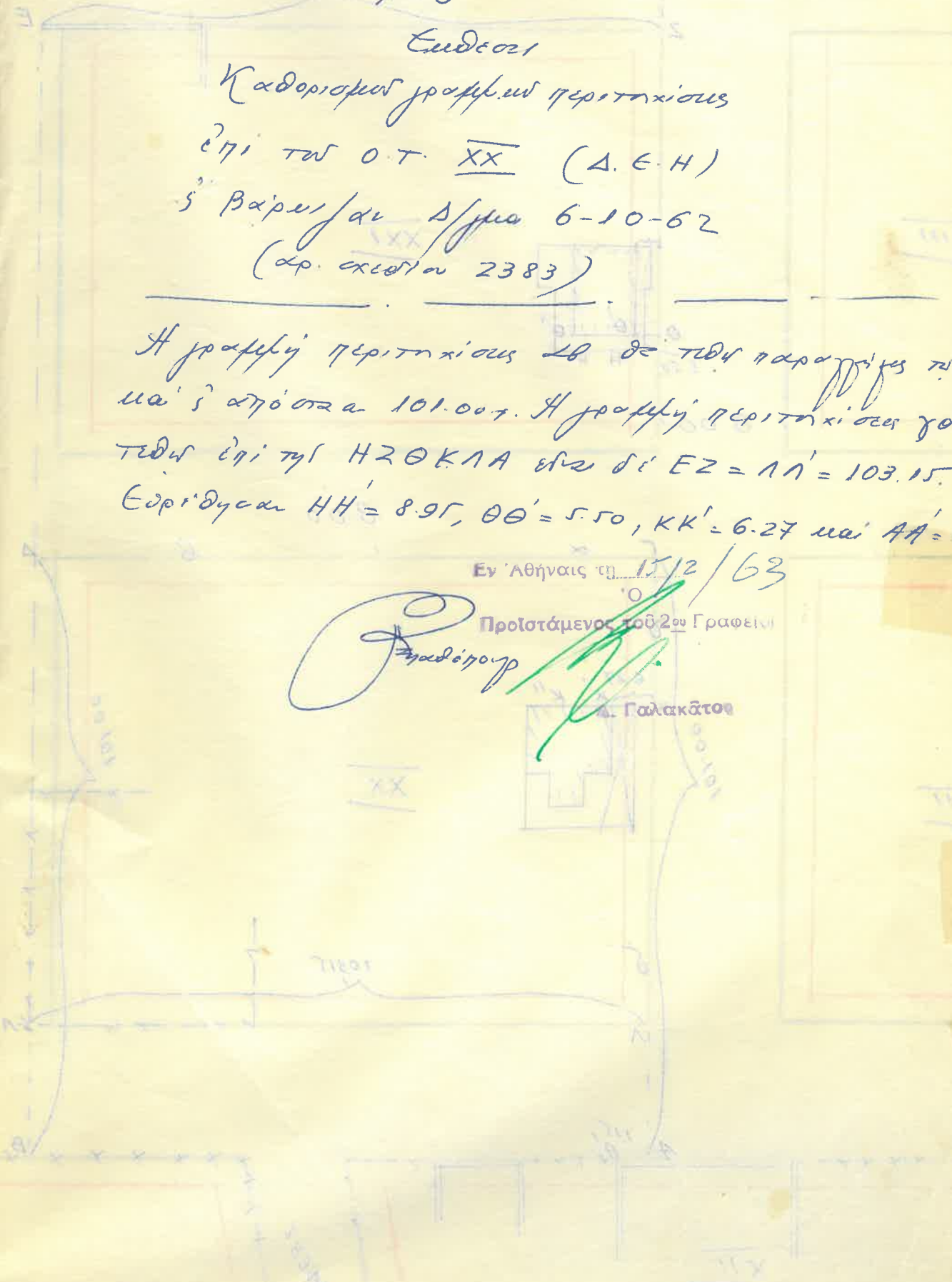
Καθορισμού γραμμών περιτηχίσεως
ἐπι τῶν ΟΤ. XX (Δ.Ε.Η)
ἡ Βαρεϊ/αι Δ/μια 6-10-62
(αρ. αὐθ. 2383)

Ἡ γραμμὴ περιτηχίσεως τῆς ἀπὸ τῶν παραλλήλων τῶν ΑΒ
μα' ἡ ἀπόστα 101.00τ. Ἡ γραμμὴ περιτηχίσεως τῆς ἀπὸ
τῶν ἐπι τῆς ΗΖΘΚΛΑ ἐστὶ δὲ ΕΖ = ΑΛ' = 103.15.
Εὐρίθυσαι ΗΗ' = 8.95, ΘΘ' = 5.50, ΚΚ' = 6.27 καὶ ΑΑ' = 1.15.

Εν Ἀθήναις τῆς 15/2/63

Προϊστάμενος τοῦ 2ου Γραφείου

Γαλακᾶτος
Δ. Γαλακᾶτος



129 X

129 X

129 X

129 X

129 X

129 X

129 X

129 X

129 X